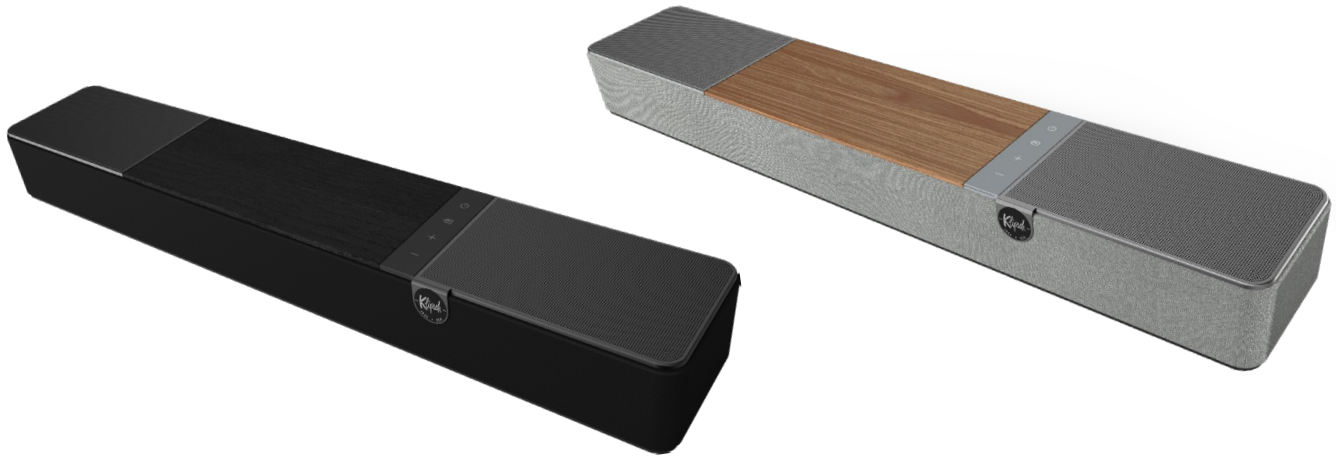


# FLEXUS CORE 100

COMPACT DOLBY ATMOS SOUND BAR

# Klipsch®



Enhance your audio journey with Flexus, our cutting-edge sound system, meticulously crafted to immerse you in unparalleled sonic bliss.

## FLEXUS SOUND SYSTEM - BUILD YOUR SOUND, YOUR WAY!

The Flexus sound system comprises sound bars Flexus Core 100 and 200, one pair of compact wireless surround speakers (SURR 100) and a powerful subwoofer (SUB 100). We offer you the flexibility to create your own expansive audio system by adding to the sound bar a pair of surround speakers and one or two subwoofers to create an expansive audio landscape that brings movies, music, and gaming to life like never before.

## SOLID FOUNDATIONS: 2.1-CHANNEL SOUND BAR

Powered by exceptional acoustics and Klipsch Transport technology, this 2.1-channel sound bar is the first step towards building the whole home entertainment ecosystem of your dreams.

## UPGRADE YOUR TV EASILY WITH HDMI-eARC FOR INSTANT IMMERSION

Thanks to the HDMI-eARC connection, plug the Flexus Core 100 soundbar on your TV (your TV must be e-arc compatible) and let yourself be transported into a realm where sound knows no boundaries.

## DOLBY ATMOS FOR IMMERSIVE, MULTIDIMENSIONAL SOUND

Built for processing the newest movies, shows, and games, the Flexus Core 100 features Dolby Atmos-processing technology to enhance your viewing experience.

## CUSTOM-TUNED SOUND, BEST BASS IN CLASS

This 2.1 soundbar is equipped with two 2.25" aluminium cone drivers finely tuned by Klipsch acousticians and dual 4" built-in subwoofers for best-in-class bass. For those who like more bass, 1 or 2 subwoofers Flexus Sub 100 can be added wirelessly.

## KLIPSCH TRANSPORT TECH FOR ULTIMATE CONNECTIVITY

Klipsch Transport, a wireless technology from Klipsch, connects all Flexus products (soundbars, surrounds, subwoofers) quickly and without latency.

## STYLED FOR ANY AESTHETIC

The Klipsch Flexus Core 100 was meticulously engineered down to the last millimeter with premium materials, thoughtful design, and calculated engineering for a family of products to fit any space or aesthetic.

## ECO-CONSCIOUS PACKAGING

We're committed to providing great sound for generations - which is why our packaging is designed to be earth-friendly, with careful consideration to minimize.

## POWERED BY ONKYO®

Meticulously reviewed by our engineers at sister company Onkyo, the Klipsch Flexus system passed over 1,000 rigorous tests to ensure awesome audio performance and stellar interconnectivity.

## SPECIFICATIONS

<b>SPEAKER SYSTEM</b>	2.1 with Virtualized Dolby Atmos
<b>MAX ACOUSTIC OUTPUT</b>	96.4dB
<b>FRONT FIRING DRIVERS</b>	2 x 2.25" Aluminum Cone Drivers
<b>UPFIRING DRIVERS</b>	2 x 4" High-Output Paper Cone Woofers
<b>ENCLOSURE TYPE</b>	Sealed - Plastic, Wood, Metal
<b>SYSTEM POWER</b>	100W RMS
<b>FREQUENCY RESPONSE</b>	45Hz - 20kHz
<b>INPUTS</b>	HDMI eARC • Bluetooth • USB-C • Digital Optical
<b>OUTPUTS</b>	Subwoofer (RCA) Output
<b>DIMENSIONS</b>	3" (76mm) H x 28" (711mm) W x 5" (127mm) D
<b>FINISH</b>	Ebony Vinyl
<b>VOLTAGE</b>	100-240V 50/60Hz Internal Power Supply
<b>WEIGHT</b>	10lbs (4.54kg)
<b>INCLUDED ACCESSORIES</b>	(1) BLE Backlit Remote Control (1) 2.0m IEC Power Cord (Region Specific) (1) 1.5m HDMI Cable (2) AAA Batteries (2) L-Shaped Mounting Brackets (1) Mounting Hardware (1) User Manual
<b>MOUNTING OPTIONS</b>	1/4"-20 Thread Included slim-depth wall brackets

FINISH	SKU	EAN
Ebony	1071981	0743878053487
Walnut	1073538	0743878067071