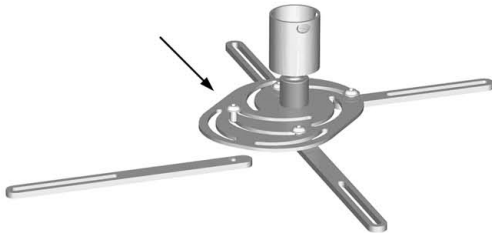


## Mounting instructions

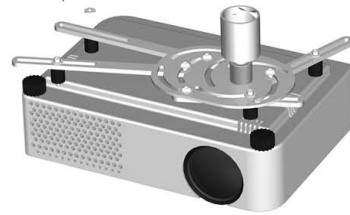
Wall mount with continuous length adjustment  
002.1565, 002.1570, 002.1575

### 1 Mounting bracket arms



Mount the four arms to the disc. Use four M6x10 bolts.

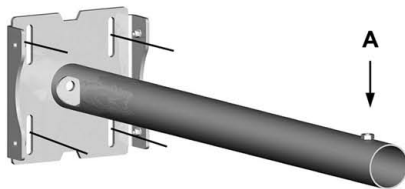
### 2 Mounting projector



Mount the projector to the arms. Use the supplied spacers, bolts and washers. In case of a height difference between the mounting points and the projector, spacers could be used to intercept this difference. Position the ball joint above the centre, or at the nearest possibility of the projector lens.

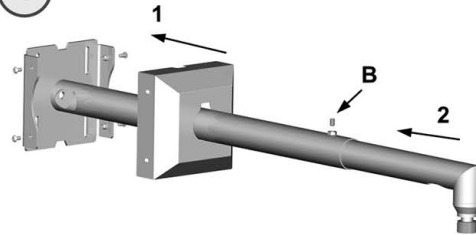
See page 2 for examples of mounting configurations

### 3 Mounting outer tube to wall



Mount the outer tube to the wall. Be sure nut (A) on the tube, is pointing upwards. Use the slots in the wall plate to adjust the height of the tube system.

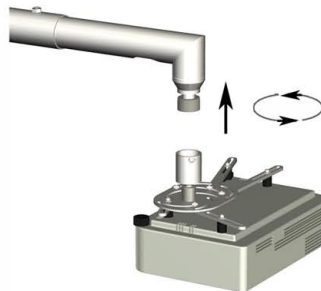
### 4 Mounting finishing cap and inner tube



1. Mount the finishing cap over the wall plate by using 4 bolts (M6x12). The cable transit in the finishing cap can be mounted upwards or downwards depending on the position of the cables.  
2. Slide the inner tube in the outer tube, adjust the length of the system and fix the position by tightening the set screw (B).

### 5 Mounting projector / tube system

Mount the projector to the tube system by tightening the ball joint. Turn ball clamping ring to set the resistance of the adjustment. Set the projector in the right direction. Extra fixation of the ball joint can be obtained by using a screwdriver through the hole of the ball clamping ring to turn it tight. This same hole can be used for placing an optional anti-theft lock.



Wall mount with continuous length adjustment  
002.1565, 002.1570, 002.1575

Examples of projector/bracket mounting configurations

