

The button control

The button control is divided into parallel and memory drive. The two arrow buttons are used for parallel drive and the last four buttons for memory drive/storing memory.

- | | |
|-------------------|----------------|
| Λ = Parallel up | • = Memory 1 |
| V = Parallel down | •• = Memory 2 |
| S = Store memory | ••• = Memory 3 |

Parallel drive

The arrow buttons start the parallel drive. The function is only activated when holding the button down.

Store memory

- Press S - button
- Within two seconds press one of the small buttons with dots and the position will be stored at this button.

Memory drive (small buttons with dots)

Press one of the memory buttons and the system will start driving to the pre-programmed memory position. Keep the button pressed until the position is reached.

Important safety precautions:

- Wall mounting screw and plugs are not included (depends on wall material).
- Be aware that furniture like cupboards, chairs etc. are not to be placed directly under or above the range of the wall lift & display.
- Operate the lift only in direct sight and by designated persons.

Changes or modifications void any warranty and exclude any liability. This user manual includes detailed instructions for your product. Figures and illustrations in this user manual are provided for reference only and may differ from actual equipment appearance. Equipment design and specifications may be changed without notice.

CTOUCH Europe BV - Het Schakelplein 20, 5651 GR Eindhoven, The Netherlands

Manual CTOUCH Wallom2 wall lift

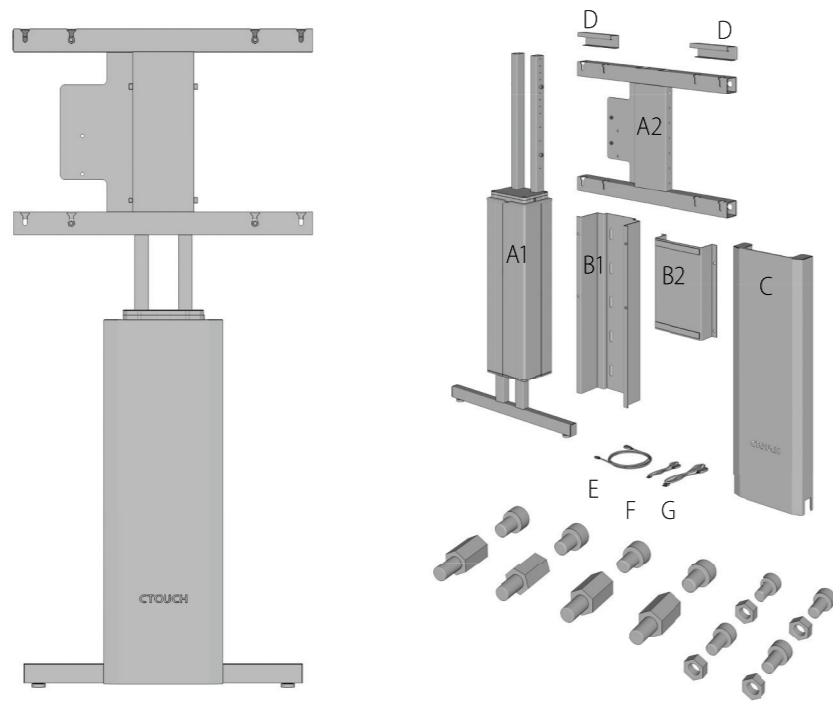
www.ctouch.eu

INSTALLATION MANUAL



CTOUCHHimPD697V170829

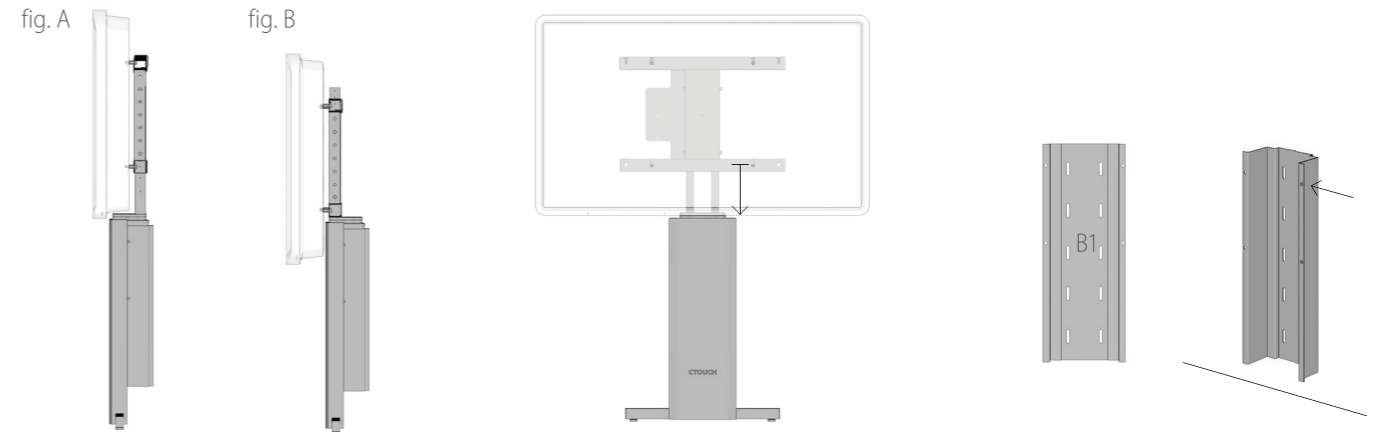
Manual CTOUCH Wallom2 wall lift



VESA:
600 x 400 mm
400 x 400 mm

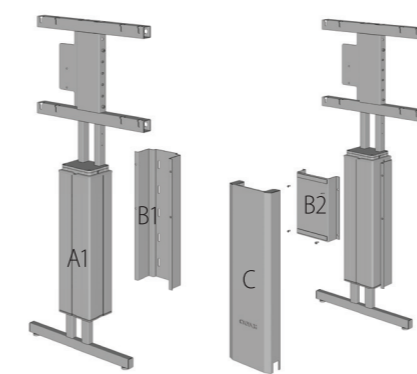
PARTS:	MOUNTING:
A1. Wall lift frame	4x M8 bolt
A2. Wall lift H bracket	4x M8 bolt
B1. Wall mount	4x M8 Nut
B2. Wall mount	4x M8 20mm spacer
C. Front plate	
D. Lock inserts	
E. Motor cable	
F. Button control panel	
G. Power cable	

OPTIONAL ACCESSORIES:
extension bracket 230mm extra up or down



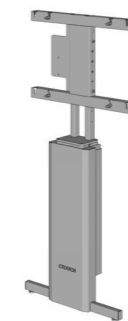
- Before installation make a set-up choice:
Fig. A = Set-up with maximum proximity to the wall.
Fig. B = Set-up with minimum height of the display (first change the set-up to fig. B).

The default configuration is Fig. A with maximum proximity to the wall and a minimum height of 825 mm from floor to the bottom of the display.
If you prefer the lowest position configuration (Fig. B), unscrew the 4 bolts on top of the lift and turn the top part 180 degrees. Tighten the 4 bolts again. Use the additional extension brackets (optional accessory) if you need an even lower position of the display.



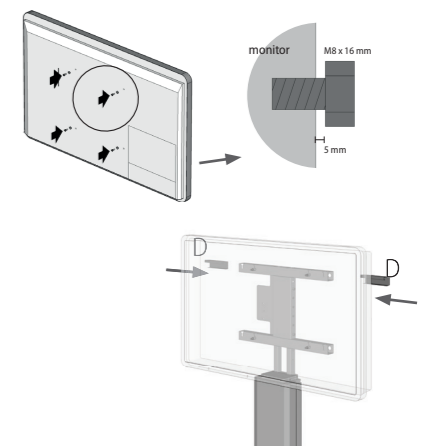
- Place the lift (A1) in the wall mount (B1) and lock this with the small front plate (B2). Fasten the screws B2 on B1. Put the front plate (C) in position and fasten it with the Velcro tape.

- To define your ideal height position in the default configuration (Fig. A), the bracket (A2) must slide over the 2 vertical rails.
Measure the lowest VESA point to the bottom of the display. This should be similar to the distance from the top of the wall lift frame (A1) to the lowest VESA point (see arrow in drawing above).



- Install all cables E, F and G.
 - Connect the cable from the lift column (A1) to the motor cable (E). Connect the other end to input "1" on top of the black control unit placed on the bracket (A2).
 - Connect the button control cable (F) to input "A2" on the black control unit placed on bracket (A2).
 - Connect the power cable (G) in the black control unit to input "AC".
 - Connect the power cable (G) into a power socket. First time use: press the lift to go fully down before going upwards.

- Drill a minimum of four holes in the constructive wall and secure the wall mount plate (B1).
Determine the height of the wall mount plate (B1) by aligning it to the lift column (A1).
Make sure the 4 small screw holes in the edge of the plate are on the top side (see arrow in drawing above) This to ensure the wall mount connects with the front wall mount plate (B2).



- Place the 4 VESA screws in the back plate of the display. Place the display on the H-bracket (A2) and tighten the VESA screws.
IMPORTANT SAFETY NOTE: After placing the display lock it with lock inserts (D).