

**The button control**

The button control is divided into parallel and memory drive. The two arrow buttons are used for parallel drive and the last four buttons for memory drive/storing memory.

- Λ = Parallel up      • = Memory 1
- V = Parallel down    •• = Memory 2
- S = Store memory    ••• = Memory 3

**Parallel drive**

The arrow buttons start the parallel drive. The function is only activated when holding the button down.

**Store memory**

- Press S - button
- Within two seconds press one of the small buttons with dots and the position will be stored at this button.

**Memory drive (small buttons with dots)**

Press one of the memory buttons and the system will start driving to the pre-programmed memory position. Keep the button pressed until the position is reached.

**Important Safety Precautions:**

- Before moving the mobile lift, put the display in the lowest position.
- The wheels are optimized for indoor use. It is not advisable to move the lift on rough surfaces such as pavements etc.
- Be aware that furniture like cupboards, chairs etc. are not to be placed directly under or above the range of the mobile lift and display.
- Operate the lift only in direct sight and by designated persons.

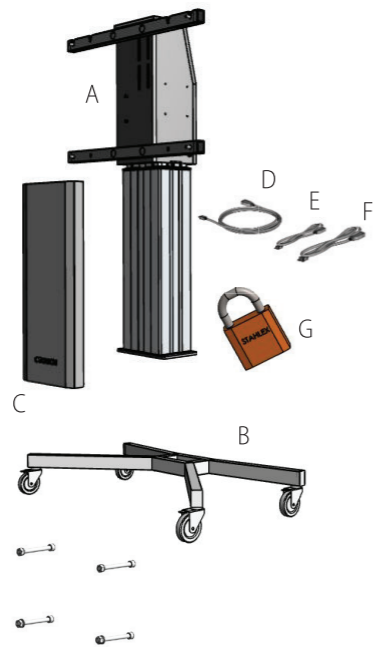
Changes or modifications void any warranty and exclude any liability. This user manual includes detailed instructions for your product. Figures and illustrations in this user manual are provided for reference only and may differ from actual equipment appearance. Equipment design and specifications may be changed without notice.

# INSTALLATION MANUAL





VESA:  
600 x 400 mm  
400 x 400 mm

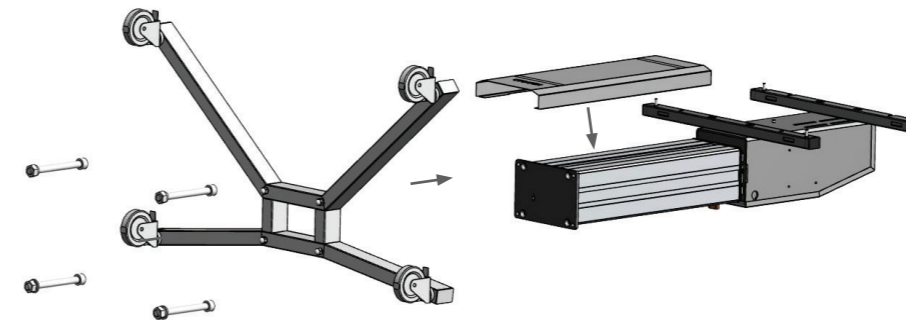


- PARTS:**
- A. Top frame with electrical lift
  - B. Base frame with wheels
  - C. Front plate
  - D. Motor cable
  - E. Button control panel
  - F. Power cable
  - G. Padlock for cabinet

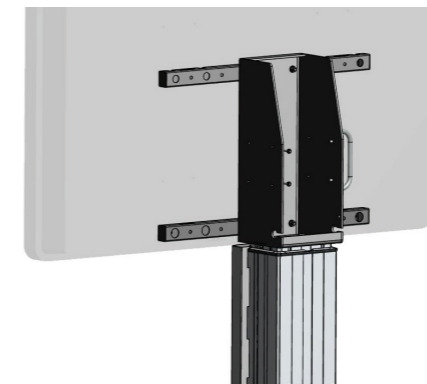
- MOUNTING:**
- 4x M8
  - 4x M8 ring
  - 4x M8 spring ring
  - 4x M8 nut



- OPTIONAL ACCESSORIES:**
1. PC tower bracket
  2. Laptop shelf
  3. Extension bracket for additional 230 mm span width (up or down).



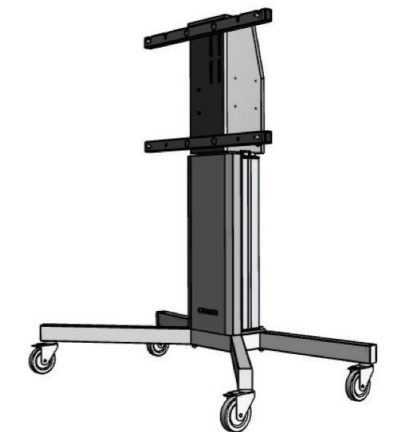
1. Mount the base frame (B) to the top frame (A).  
**IMPORTANT SAFETY NOTE:** While mounting keep the longest arms of the base frame (B) at the front side of the lift. **TIP:** Put the top frame (A) in horizontal position on its own packing material (see image above) in order to get the correct height while mounting the 4 bolts.



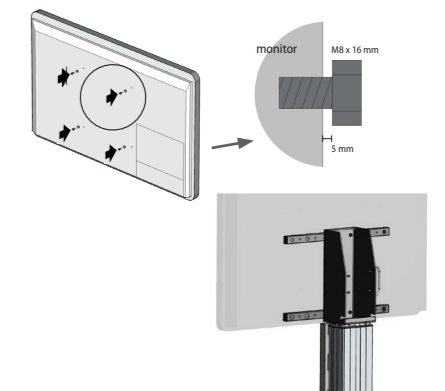
3. Install all cables D, E and F.
  - In the cabinet at the back of the top frame (A) you will find the cables, lock, keys and mounting material.
  - Connect the cable from the lift column (A) to the motor cable (D). Connect the other end to input "1" on top of the black control unit placed inside the cabinet (A).
  - Connect the button control cable (E) to input "A2" on the black control unit placed inside the cabinet (A).
  - Connect the power cable (F) in the black control unit, placed inside the cabinet (A), to input "AC".
  - Connect the power cable (F) into a power socket. First time use: press the lift to go fully down before going upwards.



4. In order to close the cabinet use the hatch and lock it by using the padlock (G).



2. Put it in a upright position and fix the front plate onto the lift column by using the velcro straps.



5. Place the top 2 VESA screws in the back plate of the display. Place the display on the top frame bracket (A), subsequently place the 2 lower VESA screws and tighten all VESA screws.